



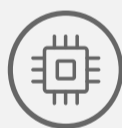
V1600GS

Single pon GPON OLT

Introduction:

V1600GS is a box-type GPON OLT with one PON port. The price of V1600GS is very attractive and the performance is very strong. The splitting ratio of its PON port is 1:128, and the farthest transmission distance is 20KM. Its uplink and downlink bandwidth is as high as: 1.25Gbps/2.5Gbps. V1600GS can be widely used in FTTH, SOHO, small business office and other application scenarios.

Highlights



High Performance Chipset

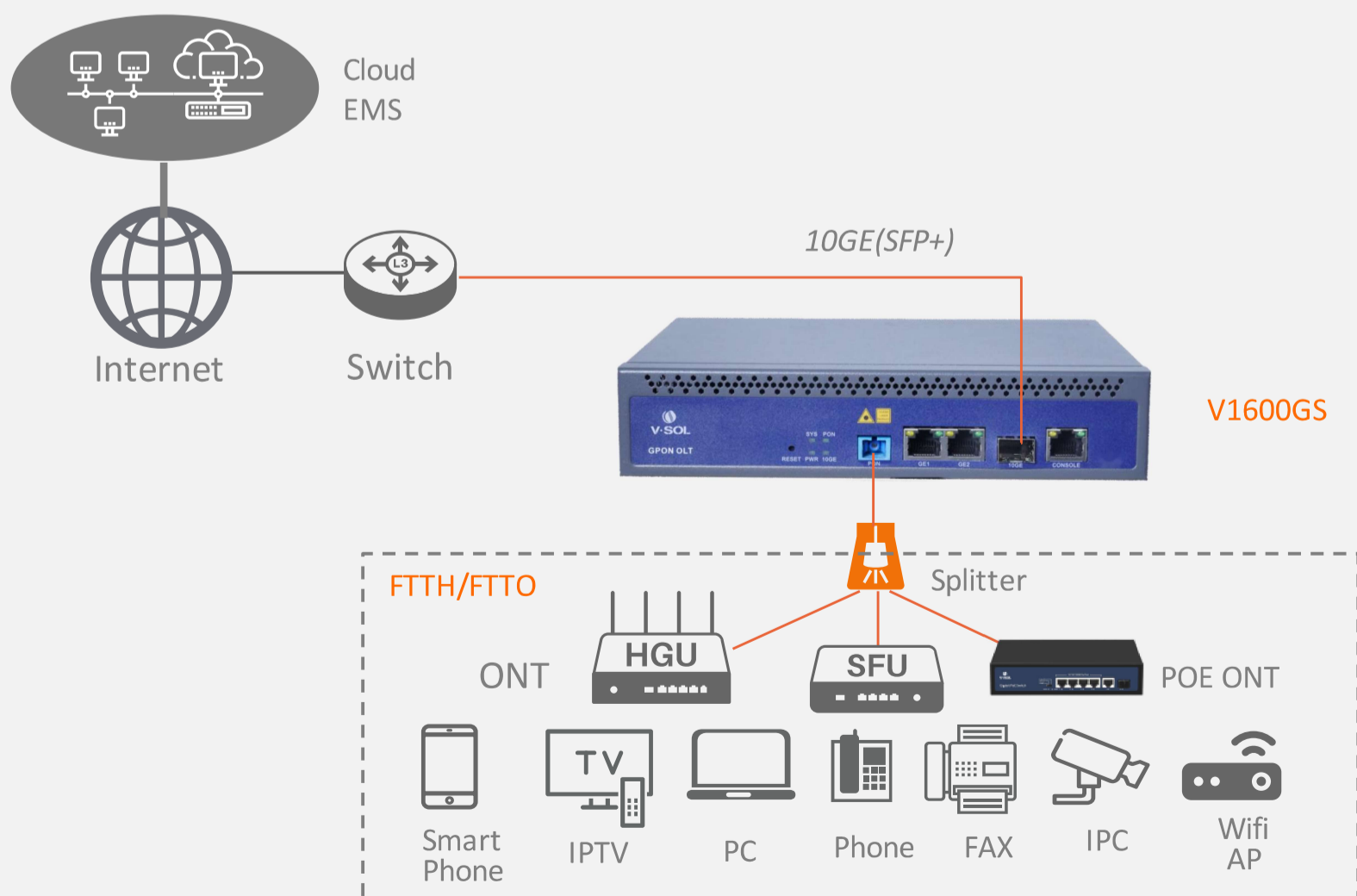


Built-in PON optic module
Mini Metal Shell
Easy Deployment



10GE(SFP+) Uplink

Application Scenarios



Technical Specifications

Item		V1600GS
Chassis	Rack	1U
Uplink Port	QTY	3
	RJ45(GE)	2
	SFP(GE)/SFP+(10GE)	1
GPON Port Specification	QTY	1
	Fiber Type	9/125μm SM
	Connector	SC/UPC, Class C++/Class C+++
	GPON port speed	Upstream 1.244Gbps, Downstream 2.488Gbps
	Wavelength	TX 1490nm, RX 1310nm
	Max splitting ratio	1:128
	Transmission Distance	20KM
Management Ports		1*CONSOLE port
Backplane Bandwidth (Gbps)		16
Port Forwarding Rate(Mpps)		23.808
Management Mode		Console/WEB/Telnet/CLI
Lightning protection level	Power supply	4KV
	Device Interface	1KV

Management Function

- Telnet,CLI,WEB;
- Port Status monitoring and configuration management
- Online ONTconfiguration and management
- User management
- Alarm management

Layer2 Switch

- 1K Mac address
- Support 4096 VLANs
- Support port VLAN
- Support VLAN tag/Un-tag, VLAN transparent transmission
- Support storm control based on port
- Support port isolation
- Support port rate limitation
- Support 802.1D and 802.1W
- Access control list
- IEEE802.x flow control
- Port stability statistic and monitoring

GPON Function

- Tcont DBA
- Gempport traffic
- In compliant with ITU-T984.x standard
- Up to 20KM transmission Distance
- Support data encryption, multi-cast, port VLAN, separation, etc
- Support ONT auto-discovery/link detection/remote upgrade of software
- Support VLAN division and user separation to avoid broadcast storm
- Support power-off alarmfunction, easy for link problem detection
- Support broadcasting storm resistance function

Dimension (L*W*H)

- 210mm*173mm*43.6mm

Weight

- Net weight of single power: 1.07kg

Power Adapter

- DC 12V/2A
- AC 85~264V, 47/60Hz(Default)

Working Temperature

- 0°C ~+55°C

Storage Temperature

- -40~+85°C

Relative Humidity

- 10~85% (non-condensing)

Ordering Information:

Product Name	Product Description	Power Configuration	Accessories
V1600GS	1*GPON, 2*RJ45+1*SFP/SFP+	1*DC 1*AC(Default) 1*AC+1*DC	1G SFP module 10G SFP+ module